

withthegrid

Press and media kit

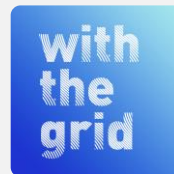
2024



What is Withthegrid?

About Withthegrid

Founded in 2017, Withthegrid is a Dutch company that connects and empowers infrastructure assets, grid operators, energy producers, traders and users through **monitoring** and **flexibility** solutions.



“Our vision at Withthegrid is simple yet ambitious: **we want to make energy systems more efficient.**”

Our goal is to, through secure technology, empower companies to **better manage and use their energy assets and the grid.** For that, we’re offering strategic tools that not only **help them save money** but also contribute to the **overall sustainability of the energy system.**

Together, we’re building a future where energy is cleaner, smarter, and more reliable.”

Paul Mignot

Co-founder and CEO of Withthegrid

What is Withthegrid?

Our story

It's in 2017, after winning the first prize of the Intel Hackathon in Amsterdam, that Paul Mignot, Rob Everhardt, Steven Hulshof, and Jeroen de Bruijn founded Withthegrid with the goal of **improving energy infrastructure with digital solutions**.

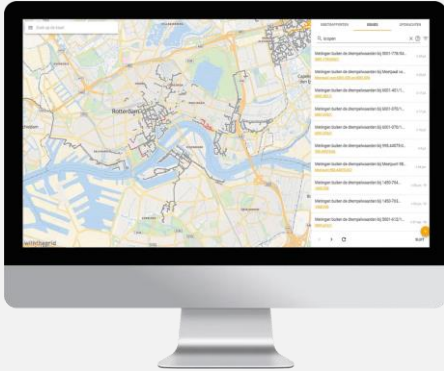
The name *Withthegrid* was chosen as a response to a small movement that advocates for an “off the grid” vision. We believe that, to realize a sustainable, fair and widespread renewable energy system, the grid is essential. Withthegrid is thus our commitment to making that vision a reality.

Withthegrid's developed its first solution, the Asset Monitoring Platform (AMP), in 2017. The Teleport Gateway was launched few years later, in 2022.

Since, the company delivers its solutions in 5 countries (Netherlands, Belgium, Spain, Greece and Germany), and has grown to 26 team members.

Our solutions

Asset Monitoring Platform (AMP)



The Asset Monitoring Platform (AMP) is designed to help companies digitalize and monitor their critical infrastructure. The platform is ideal for grid operators, and companies managing extensive networks of energy assets, such as pipelines, transformers, and district heating systems.

The AMP is a ready-to-use solution for asset management, IoT connectivity, real-time analytics, and issue management. It has two separate environments:

- A *connectivity environment*, to connect and manage all IoT devices
- A *monitoring environment*, to provide insights into the connected assets

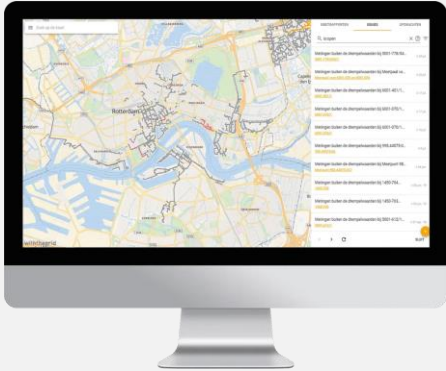
It supports a wide variety of use cases, including cathodic protection, leak detection, power quality monitoring, and water pressure management. It allows companies to:

- ✓ Extend the lifespan of their assets
- ✓ Reduce operational costs
- ✓ Improve workforce efficiency.

Our solutions

Asset Monitoring Platform (AMP)

Recent projects



Leak detection

Withthegrid deployed 900 leak detection devices for Eneco's district heating system.

These devices enabled immediate leak detection, significantly reducing maintenance and damages costs, environmental risks, and safety hazards.

Cathodic protection

Withthegrid delivered 10,700 sensors to Gasunie to digitalize their cathodic protection poles.

As a result, technical staff no longer need to take manual measurements – data about the network's status is now sent directly to the AMP.

Our solutions

Teleport Gateway

The Teleport is a gateway that connects energy assets (PV inverters, wind turbines, batteries, EV charging station, meters...) securely to the cloud, and enables real-time control.

This solution integrates with aggregators, DSOs, energy hubs platform and cloud EMS, allowing stakeholders to remotely control and optimize the use of their energy assets.

Additionally, the Teleport can be used as an **on-site EMS**: it supports “behind-the-meter” control logics and ensures that the user’s transport capacity (feed-in or take-off) is never exceeded.

The Teleport currently connects to 250+ type of energy assets, with new additions every week.





Our solutions

Teleport Gateway

Recent projects

Realtime Interface

Successful pilot projects with the three main DSOs in the Netherlands (Enexis, Liander and Stedin) for the Realtime Interface (RTI). The Teleport became the first RTI-certified customer endpoint.

Large scale batteries

The Teleport controls and monitors Castor, the largest battery in the Netherlands, as well as the second super-battery of the Johan Cruijff ArenA of Amsterdam.

Energy hubs

The Teleport is used by all the companies participating in the following energy hubs project: Port of Amsterdam, Pannenberg, Lage Weide and Kempisch.

Our solutions

Withthegrid's clients

Withthegrid has earned the trust of leading companies in the energy sector, ranging from grid operators to service providers across Europe.

- **Grid operators:** Clients like **Gasunie** and **Stedin** use the AMP to monitor their energy infrastructures.
- **Energy producers & cooperatives:** Organizations like **Vattenfall**, **Vandebbron**, and **SamenOM** leverage the Teleport to remotely control energy assets.
- **International reach:** Withthegrid's solutions have gained international recognition, attracting clients from Belgium, Spain, Greece and Germany.

Gasunie

dunea

Eneco

Tennet

STEDIN

groendus

vandebbron

edmi

SEMPER
POWER

REPOWERED

Waterbedrijf
Groningen

VATTENFALL

Shell

ELIX

ZONNESTROOM
NEDERLAND

om | nieuwe
energie

Our leadership team



Paul Mignot

Chief Executive Officer & Co-founder of Withthegrid



Before co-founding Withthegrid, Paul started his career at Stedin, one of the Netherlands' largest grid operators, where he managed infrastructure and guided key investment strategies to ensure the grid met rigorous quality standards. Later, as a Senior Energy Consultant at Roland Berger, he tackled diverse energy projects for suppliers and grid operators, where he first collaborated with Rob, his future co-founder.

During his time in the field, Paul recognized critical issues faced by electricity grid operators, such as aging infrastructure, congestion, and a shortage of skilled workers. This sparked the idea for Withthegrid - a company developing digital solutions to prepare the grid for the energy transition.

The company officially took shape in 2016, after Paul, alongside Steven, Jeroen, and Rob, won the Intel Hackathon. Today, Paul leads Withthegrid's strategy and commercial direction, driving its mission forward.

He holds an MSc in Energy Science and a BSc in Science and Innovation Management from Utrecht University.

Our leadership team



Rob Everhardt

Chief Technology Officer & Co-founder of Withthegrid



Before co-founding Withthegrid, Rob honed his expertise as a strategy consultant at Roland Berger, a leading European management consulting firm. During his tenure, he specialized in advising clients within the transportation sector.

It was at Roland Berger that he first teamed up with Paul, laying the groundwork for their future collaboration. Together, they launched Withthegrid in 2017.

As CTO of Withthegrid, Rob oversees the company's product and service offerings. His primary focus is ensuring that the Teleport remains a user-friendly, scalable, and targeted solution for energy grid management.

Rob holds an MSc in Econometrics and Operations Research from the University of Groningen.

Our leadership team



Willem de Munnick

Chief Operating Officer of Withthegrid



Before joining Withthegrid, Willem built his career at Valcon, where he worked as a Consultant and Project Manager for major distribution system operators like Stedin and Liander. During this time, he specialized in process optimization, standardization, and risk management.

Willem's passion for contributing to meaningful projects in the energy transition drew him to Withthegrid early on, where he initially served as Head of Operations. Now, as COO, Willem is driven by the ambition to scale the company's operational processes, positioning Withthegrid as the digital backbone of the energy transition.

He holds an MSc in Neuroscience and a BSc in Biomedical Sciences from Utrecht University.

Branding assets

Company name

Withthegrid and **withthegrid** are the exclusive representations of our brand.

We ask to **always** use these approved formats.

Forbidden representations:
With The Grid, WITHTHEGRID

Our logos

The gradient logo:

- Ideal for larger formats, such as posters and digital platforms.
- Download [here](#)

The simple logo:

- Used when space is limited or when an understated presence is needed.
- Download [black, white](#)

Picture download

Leadership team:

- Portrait [Paul Mignot](#)
- Portrait [Rob Everardt](#)
- Portrait [Willem de Munnick](#)

Solutions:

- [Teleport Gateway](#)
- [Asset Monitoring Platform](#)

Contact information

Anaïs Wampack

B2B Marketer

anaïs@withthegrid.com

Withthegrid

withthegrid.com

Dotslash Utrecht – Campus, Europalaan
400, 3526 KS Utrecht (NL)

